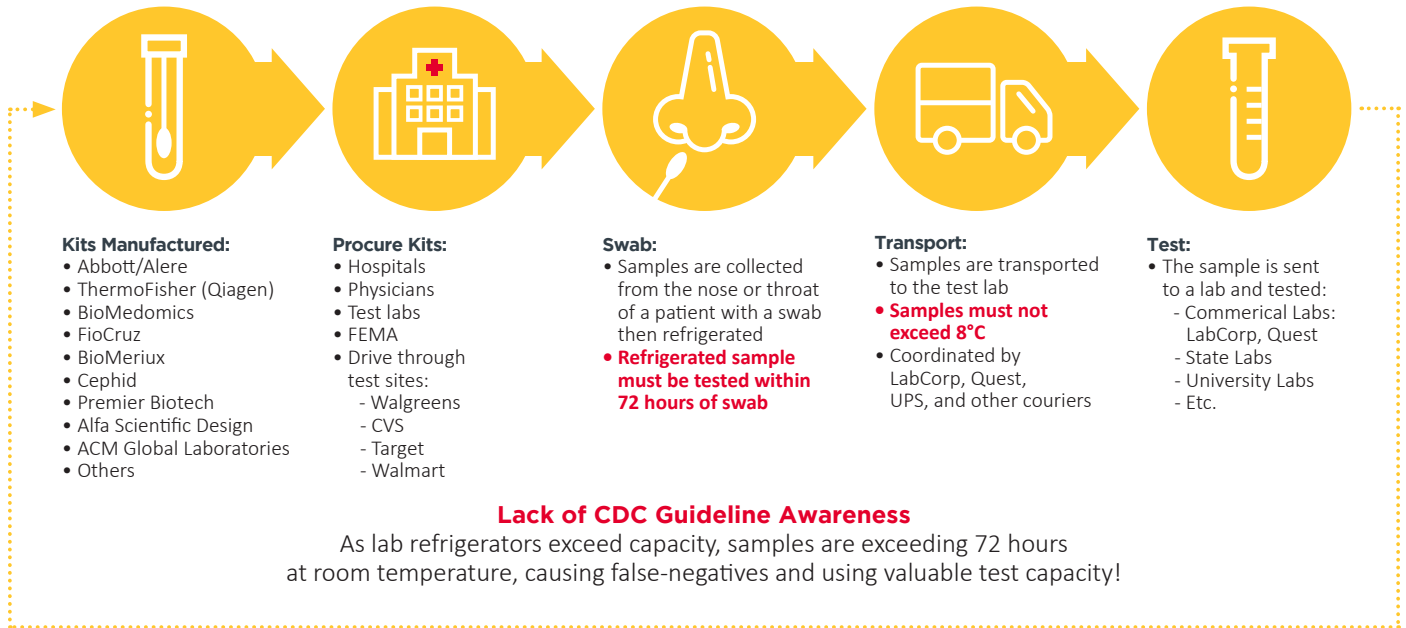


COVID-19 TempControl

What is the Process for Testing and Who are the Players?



The U.S. Center for Disease Control (CDC) issued guidelines for the storage and transport of COVID-19 specimens.

General Guidelines:

If refrigerated, store specimens less than 8°C and ship overnight on ice pack.

Following these guidelines will reduce specimen rejection rate and reduce opportunities for “false negative results.”

Causes for Rejection:

- Refrigerated samples greater than 72 hours old
- Room temperature specimen submitted
- Improperly labeled
- Grossly contaminated; broken or leaking transport device

We are partnering with test kit providers (i.e. Thermo Fisher and BioMérieux), medical supply / cold chain packaging distributors, health departments, hospitals, and affiliated laboratories to prevent unnecessary false negative COVID-19 test results through simple temperature monitoring.

SpotSee Hotline:

Domestic: (800) 527-9497

International: +1 (214)-736-4578

SpotSee's Product that Indicates if Specimens Have Exceeded Control Temperatures:

COVID-19 TempControl

Time and Date	
Specimen Collected	
Specimen Tested	

WarmMark® Time-Temp Tag

RED INDICATES BRIEF EXPOSURE ABOVE 8°C/46°F

MODERATE EXPOSURE ABOVE 8°C/46°F

PROLONGED EXPOSURE ABOVE 8°C/46°F

IF ANY RED, reject sample.

REJECT: >8C

SpotSee
www.spotsee.io
Part Number: 27163

Per CDC guidelines, store specimens less than 8°C and ship overnight on ice pack.